



P6001

Prefabricated house

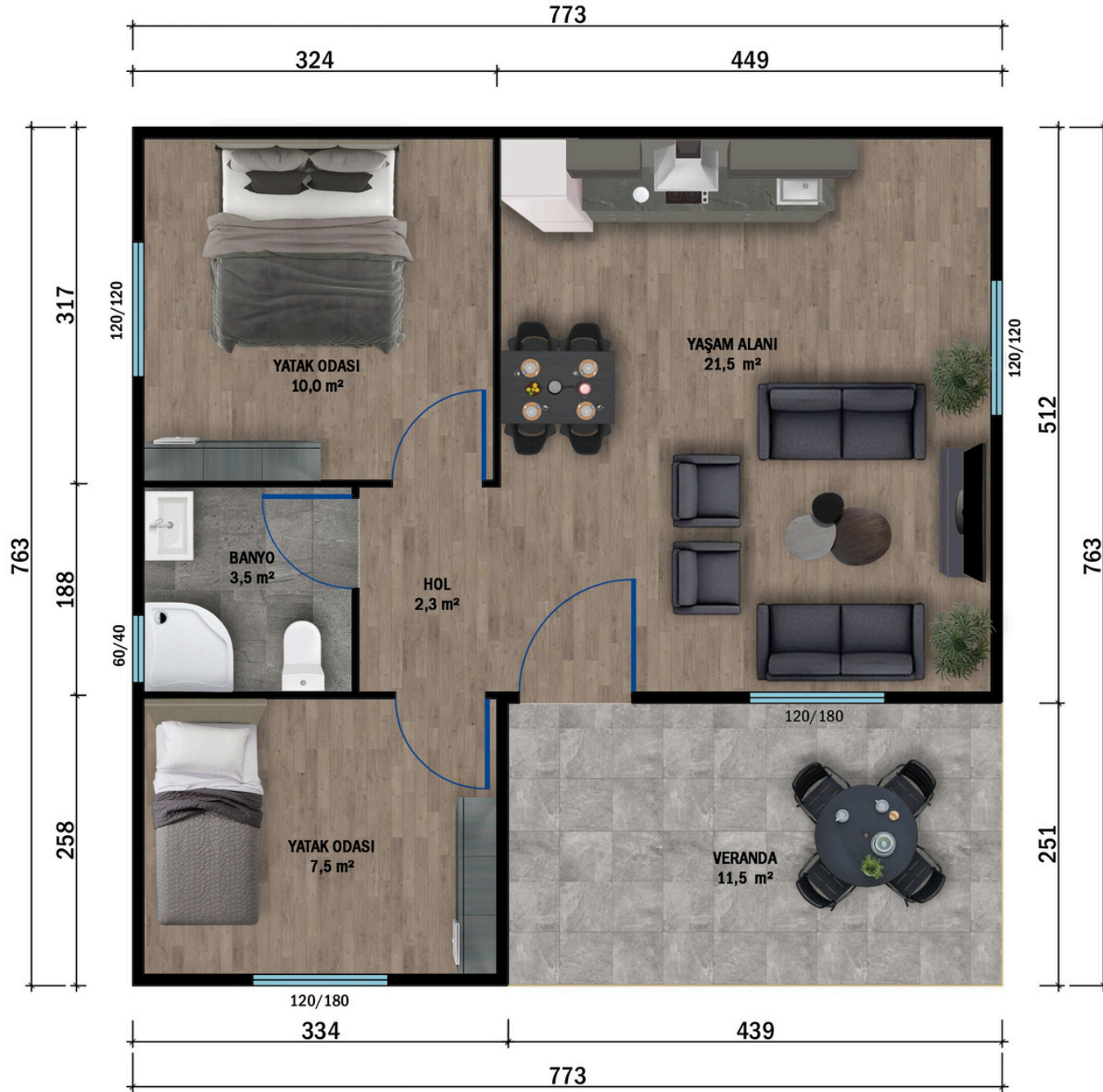
**Total
60m²**



Room Schedule (Space List)

- Veranda: 11.5 m²
- Bedroom 1: 17.5 m²
- Bedroom 2: 17.5 m²
- Bathroom: 3.5 m²
- Entrance & Hallway: 2.3 m²
- Kitchen + Living Room: 21.5 m²

2+1





P6501



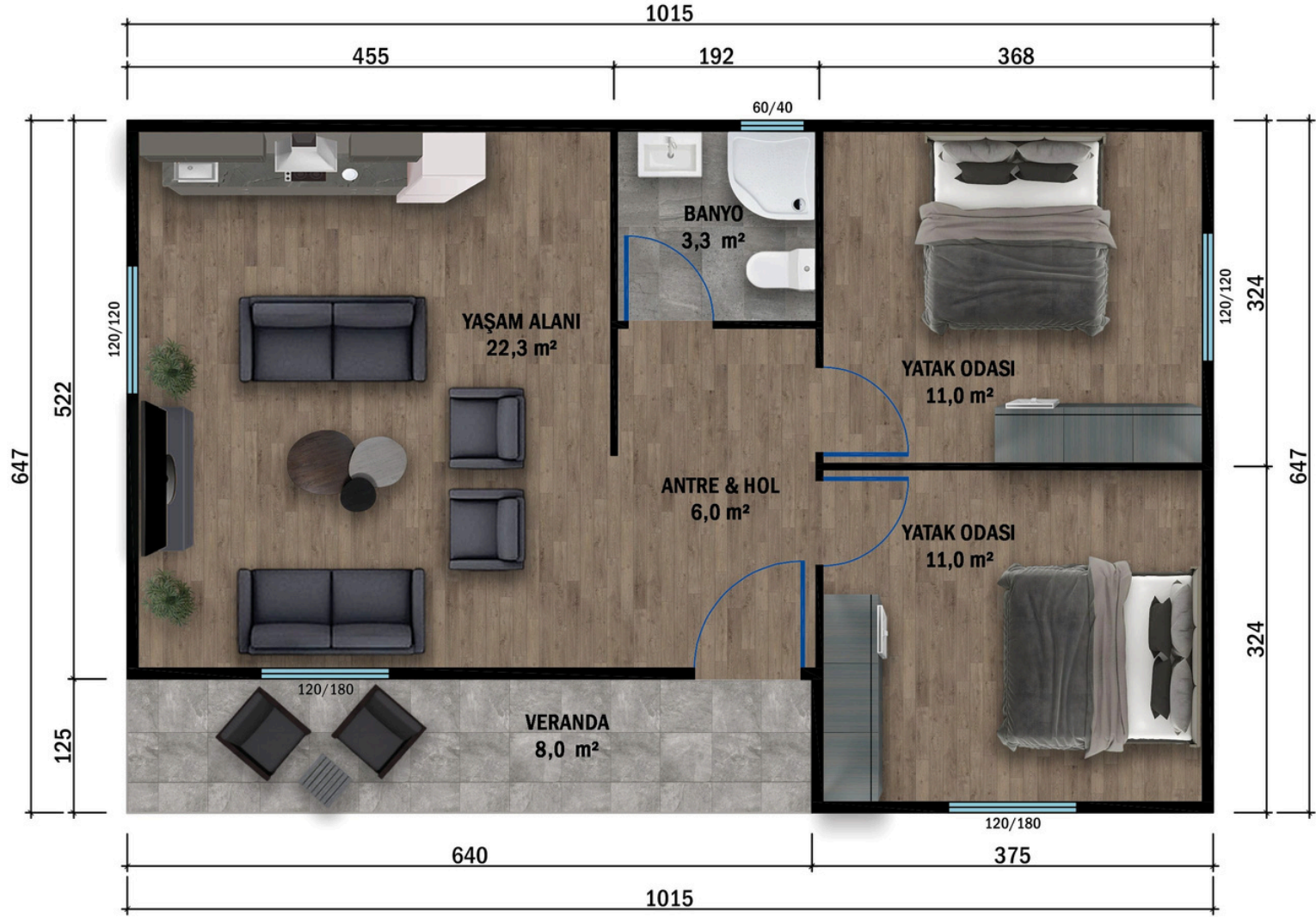
Prefabricated house

Total
65,6m²



Room Schedule (Space List)

- Veranda: 8 m²
- Bedroom 1: 11 m²
- Bedroom 2: 11 m²
- Bathroom: 3.3 m²
- Entrance & Hallway: 6 m²
- Kitchen + Living Room: 22.3 m²



ZEMİN KAT PLANI
65,6 m²
2+1

2+1



P6701



Prefabricated house

Total
67m²



Room Schedule (Space List)

- Veranda: 13.8 m²
- Bedroom 1: 10.35 m²
- Bedroom 2: 10.35 m²
- Bathroom: 3.4 m²
- Entrance & Hallway: 4.5 m²
- Kitchen + Living Room: 19.6 m²
- Porch (Canopy): 1.5 m²

2+1





P7001



Prefabricated house

Toplam Net
70m²



Room Schedule (Space List)

- Veranda: 9.63 m²
- Bedroom 1: 9.4 m²
- Bedroom 2: 9.4 m²
- Bathroom: 3 m²
- Entrance & Hallway: 6.5 m²
- Kitchen: 7.8 m²
- Living Room: 19 m²

1+2





P7401



Prefabricated house

Total

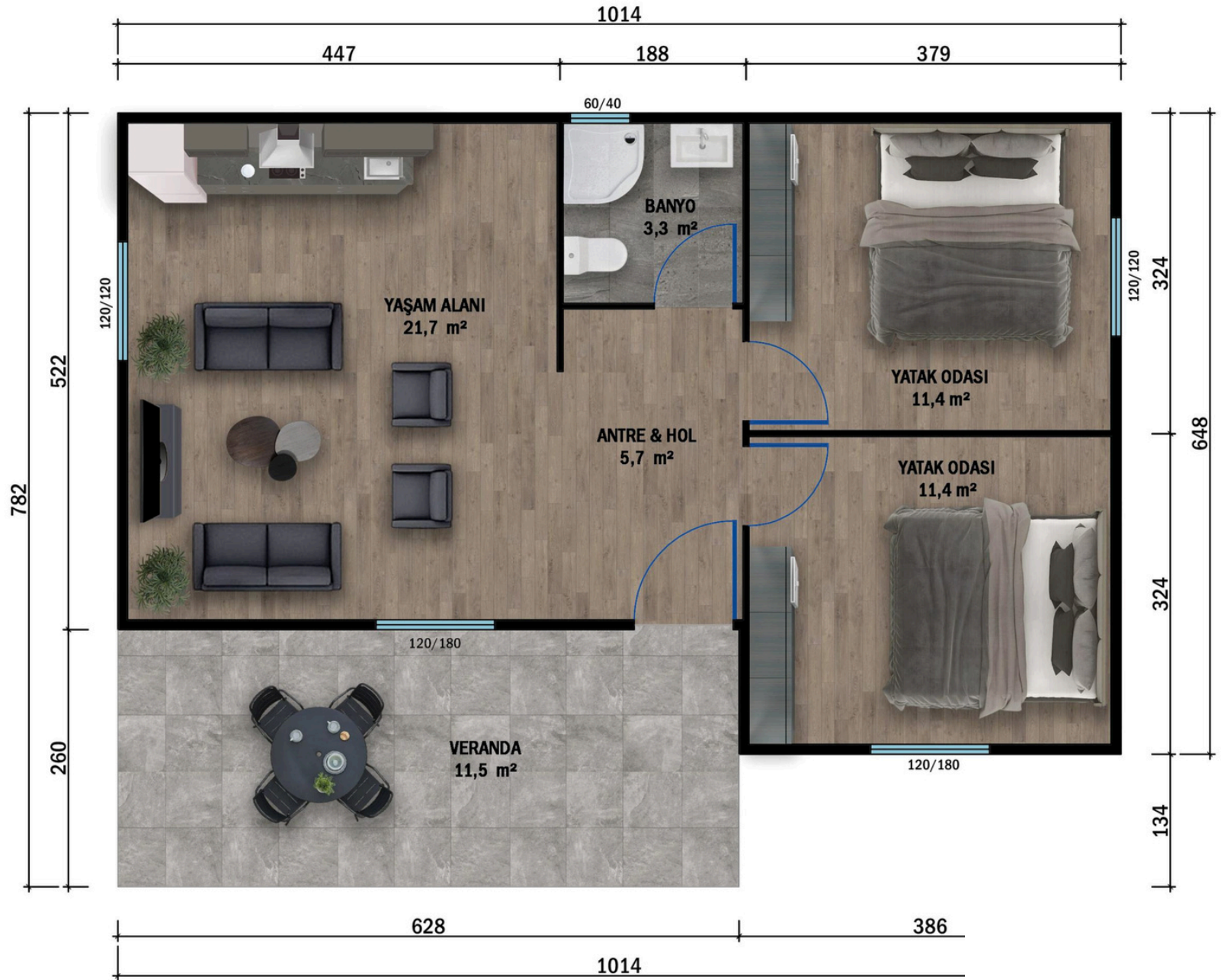
74m²



Room Schedule (Space List)

- Veranda: 11.5 m²
- Bedroom 1: 11.4 m²
- Bedroom 2: 11.4 m²
- Bathroom: 3.3 m²
- Entrance & Hallway: 5.7 m²
- Kitchen + Living Room: 21.7 m²

2+1



ZEMIN KAT PLANI
74,0 m²



P7601

Prefabricated house

Total 76m²



Room Schedule (Space List)

- Veranda: 12.5 m²
- Bedroom 1: 15 m²
- Bedroom 2: 15 m²
- Bathroom: 4.4 m²
- Entrance & Hallway: 5.5 m²
- Kitchen + Living Room: 19 m²

2+1





P8201



Prefabricated house

Total
82m²



Room Schedule (Space List)

- Veranda: 9.3 m²
- Bedroom 1: 11.05 m²
- Bedroom 2: 11.05 m²
- Bathroom: 4.3 m²
- Kitchen + Living Room: 37.7 m²

2+1





P8501



Prefabricated house

Total
85m²



Room Schedule (Space List)

- Veranda: 10.9 m²
- Bedroom 1: 11.2 m²
- Bedroom 2: 11.2 m²
- Bathroom: 5 m²
- Entrance & Hallway: 6.3 m²
- Kitchen: 11.2 m²
- Living Room: 23 m²

2+1



ZEMIN KAT PLANI



P9201



Prefabricated house

Total
92m²



Room Schedule (Space List)

- Veranda: 15.7 m²
- Bedroom 1: 11.75 m²
- Bedroom 2: 11.75 m²
- Children's Room: 9 m²
- Bathroom: 4.5 m²
- Entrance & Hallway: 1.5 m²
- Living Room + Kitchen: 32.7 m²

3+1



ZEMİN KAT PLANI
92,0 m²
3+1



P9401



Prefabricated house

Total

94m²



Room Schedule (Space List)

- Veranda: 12 m²
- Bedroom 1: 10.57 m²
- Bedroom 2: 10.57 m²
- Bedroom 3: 10.57 m²
- Bathroom: 4.5 m²
- Living Room + Kitchen: 41.6 m²

3+1





P9501



Prefabricated house

Total
95m²



Room Schedule (Space List)

- Veranda: 15.4 m²
- Bedroom 1: 9.73 m²
- Bedroom 2: 9.73 m²
- Bedroom 3: 9.74 m²
- Bathroom: 5.1 m²
- Entrance & Hallway: 9.8 m²
- Kitchen: 9.4 m²
- Living Room: 20.3 m²

3+1



ZEMİN KAT PLANI

95,0 m²

3+1



P9901



Prefabricated house

Total
99m²



Room Schedule (Space List)

- Veranda: 10.5 m²
- Bedroom 1: 14.9 m²
- Bedroom 2: 14.9 m²
- Bathroom: 3 m²
- Entrance & Hallway: 7.5 m²
- Kitchen: 13.8 m²
- Living Room: 23.4 m²

2+1



ZEMİN KAT PLANI
99,0 m²
2+1



P1051



Prefabricated house

Total

105,6m²



Room Schedule (Space List)

- Veranda: 19.1 m²
- Bedroom 1: 10.87 m²
- Bedroom 2: 10.87 m²
- Bedroom 3: 10.86 m²
- Bathroom: 4.5 m²
- Entrance & Hallway: 3.5 m²
- Living Room + Kitchen: 38.1 m²
- Porch (Canopy): 1.6 m²





P1121



Prefabricated house

Total
112m²



Room Schedule (Space List)

- Veranda: 17 m²
- Bedroom 1: 12.8 m²
- Bedroom 2: 12.8 m²
- Bedroom 3: 12.8 m²
- Bathroom: 5.2 m²
- Entrance & Hallway: 11.7 m²
- Living Room + Kitchen: 34 m²



ZEMİN KAT PLANI
112,0 m²
3+1

3+1

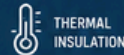
STANDARD PREFABRICATED HOUSE

TECHNICAL SPECIFICATIONS

Our prefabricated houses are economical, durable and energy efficient housing solutions with fast installation and long-lasting performance.



FAST
INSTALLATION



THERMAL
INSULATION



DURABLE
STRUCTURE

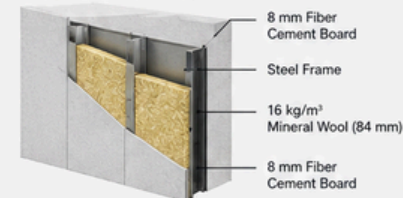


COST
EFFECTIVE

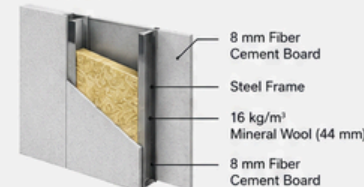
SPECIFICATION	DESCRIPTION
Wall Height	2,500 mm
Wall Panel System	8 mm Fiber Cement Board
Roof System	Gable Roof
Roof Pitch	33%
Roof Covering	Pre-painted Galvanized Steel Sheet
Roof Insulation	80 mm Mineral Wool
Exterior Wall Thickness	100 mm (8 mm Fiber Cement Board + 84 mm Steel Frame with 16 kg/m ³ Mineral Wool + 8 mm Fiber Cement Board)
Interior Wall Thickness	60 mm (8 mm Fiber Cement Board + 44 mm Steel Frame with 16 kg/m ³ Mineral Wool + 8 mm Fiber Cement Board)
Exterior Door	Insulated Steel Security Door
Interior Doors	American Panel Doors with Metal Frames
Windows	PVC Window System
Glazing	Double Glazed Insulated Glass (4+12+4 mm)
Exterior Finish	Silicone-Based Exterior Paint
Interior Finish	Plastic Interior Wall Paint
Electrical Installation	Complete electrical installation including wiring, switches, sockets, lighting fixtures and distribution board. All components shall comply with TSE or equivalent international standards.
Plumbing Installation	PP-R Polypropylene Hot & Cold Water Pipe System
Ceiling Finish	12 mm White Gypsum Board
Wet Areas	12 mm Moisture-Resistant Green Gypsum Board
Sanitary Fixtures	Toilet, Wash Basin, Shower Tray and Faucets Included
Intermediate Floor Insulation	Included for Two-Storey Buildings
Intermediate Floor Steel Structure	Included for Two-Storey Buildings
Staircase	Included for Two-Storey Buildings
Installation	Professional On-Site Assembly
Painting	Interior & Exterior Painting Included
Transportation	Delivery to Project Site Included

WALL CONSTRUCTION

EXTERIOR WALL (100 mm)



INTERIOR WALL (60 mm)



ROOF CONSTRUCTION



BATHROOM PACKAGE



QUALITY
MATERIALS
(TSE CERTIFIED)



ENERGY
EFFICIENT



COMFORTABLE
LIVING SPACES



LONG LASTING
DURABILITY



FAST & EASY
INSTALLATION

ECONOMICAL • DURABLE • SAFE • COMFORTABLE

Ideal solution for permanent housing, holiday homes, garden houses,



ASICASADesign
www.asicasa-design.ro